



## Modulul 3 Procedura de „peer review”

Prof. Dr. Mihail Hinescu, Dr. Carmen Diaconu, Prof. Dr. Monica Acalovschi

### Definiția procedurii de peer review

“Peer review” reprezintă evaluarea critică a manuscriselor transmise revistelor științifice, realizată de către experți care nu fac parte din echipa editorială”.

*International Committee of Medical Journal Editors (ICMJE). Uniform*



Proiect finanțat de  
UNIUNEA EUROPEANĂ



MINISTERUL MUNCII  
FAMILIEI ȘI PROTECȚIEI SOCIALE  
AMPOSDRU



FONDUL SOCIAL EUROPEAN  
POS DRU  
2007-2013



INSTRUMENTE STRUCTURALE  
2007-2013



MINISTERUL EDUCAȚIEI,  
CERCETĂRII ȘI INOVĂRII  
OIPOSDRU



UNITATEA EXECUTIVĂ PENTRU  
FINANȚAREA ÎNVĂȚĂMÂNTULUI  
SUPERIOR ȘI A CERCETĂRII  
ȘTIINȚIFICE UNIVERSITARE



2007

PEER REVIEW  
AND  
MANUSCRIPT  
MANAGEMENT  
IN  
SCIENTIFIC  
JOURNALS

Guidelines for Good Practice

Irene Hames



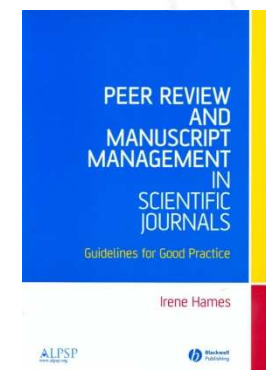
## Scopurile

- Prevenirea publicării unor lucrări de proastă calitate (deficite de concepție, design sau execuție)
- Rezultatele au fost interpretate corect și au fost considerate toate interpretările posibile
- Rezultatele sunt corect prezentate, fără ambiguități și în raport cu datele deja publicate
- Rezultatele nu sunt prea preliminare sau prea speculative
- Selecția lucrărilor de cel mai mare interes pentru cititori
- Să furnizeze editorilor dovezi pentru judecări de valoare
- Să asigure îndeplinirea criteriilor de selecție pentru o anumită publicație
- Să conducă la îmbunătățirea calității revistei



## De când se practică peer review?

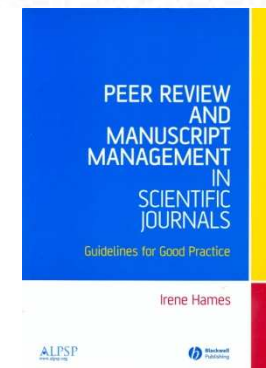
The practice of reviewing manuscripts for publication has been around for nearly 300 years, since the Royal Societies of Edinburgh\* and London started seeking the advice of their members in the early to mid-18th century to help them select articles for publication.<sup>1</sup> Gradually, a number of other scientific and professional societies adopted the practice, but procedures developed in a rather haphazard and ad hoc





## De ce se practică pe scară largă peer review?

Two main factors led to the spread of peer review. Firstly, until the relatively recent past, editors frequently had to struggle to find enough material to publish and so did not need to be selective. Over the past 50 years this has changed, to the point where submissions to scientific journals are burgeoning and editors need to be highly selective in what they publish in their journals. Secondly, as scientific areas expanded and became increasingly specialized and sophisticated, editors were no longer able to be experts in all areas. They needed to seek the opinion and advice of others. Today, peer





Ce înseamna peer review pe scară largă?

2008

The screenshot shows the PubMed search interface for the year 2008. The search criteria are set to 'PubMed' for the period '2008/01/01 to 2008/12/31'. The results show 'All: 807042' and 'Review: 81893'. The 'Display' dropdown is set to 'Summary'. The interface includes navigation tabs for 'All Databases', 'PubMed', 'Nucleotide', 'Protein', 'Genome', 'Structure', and 'OMIM'. A search bar with 'Go' and 'Clear' buttons is present. Below the search bar are buttons for 'Limits', 'Preview/Index', 'History', 'Clipboard', and 'Details'. A yellow highlight is under the 'Limits' section. The 'Display' dropdown is set to 'Summary'. Below it, the total number of items is 'All: 807042' and the number of reviews is 'Review: 81893'. The 'Show' dropdown is set to '20' and 'Sort By' is also visible. The text 'Items 1 - 20 of 807042' is displayed at the bottom.

2009

The screenshot shows the PubMed search interface for the year 2009. The search criteria are set to 'PubMed' for the period '2009/01/01 to 2009/06/11'. The results show 'All: 392027' and 'Review: 17839'. The 'Display' dropdown is set to 'Summary'. The interface includes navigation tabs for 'All Databases', 'PubMed', 'Nucleotide', 'Protein', 'Genome', 'Structure', and 'OMIM'. A search bar with 'Go' and 'Clear' buttons is present. Below the search bar are buttons for 'Limits', 'Preview/Index', 'History', 'Clipboard', and 'Details'. A yellow highlight is under the 'Limits' section. The 'Display' dropdown is set to 'Summary'. Below it, the total number of items is 'All: 392027' and the number of reviews is 'Review: 17839'. The 'Show' dropdown is set to '20' and 'Sort By' is also visible. The text 'Items 1 - 20 of 392027' is displayed at the bottom.



De ce (să) publicăm în limba engleză?

2005-2009

NCBI PubMed A service of the U.S. National Library of Medicine and the National Institutes of Health  
www.pubmed.gov

All Databases PubMed Nucleotide Protein Genome Structure OMIM

Search PubMed for [ ] Go Clear

Limits Preview/Index History Clipboard Details

Limits: Publication Date from 2005/01/01 to 2009/06/11

Display Summary Show 20 Sort By Send to

All: 3141221 Review: 339441

Items 1 - 20 of 3141221

NCBI PubMed A service of the U.S. National Library of Medicine and the National Institutes of Health  
www.pubmed.gov

All Databases PubMed Nucleotide Protein Genome Structure OMIM

Search PubMed for [ ] Go Clear

Limits Preview/Index History Clipboard Details

Limits: Publication Date from 2005/01/01 to 2009/06/11, English = 91,28%

Display Summary Show 20 Sort By Send to

All: 2867547 Review: 290948

Items 1 - 20 of 2867547



## De ce se practică pe scară largă peer review? Revistele sunt în competiție!

**Journal Summary List** [Journal Title Changes](#)

Journals from: All Journals

Sorted by: Impact Factor

Journals 181 - 200 (of 6426)

Navigation: [1 | 2 | 3 | 4 | 5 | 6 | 7 | 8 | 9 | 10]

Page 10 of 322

Ranking is based on your journal and sort selections.

Mark	Rank	Abbreviated Journal Title <i>(linked to journal information)</i>	ISSN	JCR Data <sup>i</sup>						Eigenfactor™ Metrics <sup>j</sup>	
				Total Cites	Impact Factor	5-Year Impact Factor	Immediacy Index	Articles	Cited Half-life	Eigenfactor™ Score	Article Influence™ Score
<input type="checkbox"/>	181	<a href="#">DEVELOPMENT</a>	0950-1991	46024	7.293	7.387	1.462	413	7.3	0.21992	3.768
<input type="checkbox"/>	182	<a href="#">BBA-REV CANCER</a>	0304-419X	1955	7.264	9.699	2.741	27	5.5	0.00895	3.736
<input type="checkbox"/>	182	<a href="#">MED RES REV</a>	0198-6325	2196	7.264	8.597	1.467	30	5.6	0.00788	2.529
<input type="checkbox"/>	184	<a href="#">HUM REPROD UPDATE</a>	1355-4786	2965	7.257	6.498	1.319	47	5.4	0.01315	2.327
<input type="checkbox"/>	185	<a href="#">TRENDS MOL MED</a>	1471-4914	3762	7.244	6.725	1.984	63	3.7	0.02921	2.719
<input type="checkbox"/>	186	<a href="#">ARTERIOSCL THROM VAS</a>	1079-5642	27035	7.221	7.690	1.544	360	5.7	0.11470	2.797
<input type="checkbox"/>	187	<a href="#">TRENDS ENDOCRIN MET</a>	1043-2760	3762	7.195	7.954	0.915	59	5.0	0.02097	2.938
<input type="checkbox"/>	188	<a href="#">HYPERTENSION</a>	0194-911X	26664	7.194	6.961	1.824	347	6.3	0.08406	2.120
<input type="checkbox"/>	189	<a href="#">REV MED VIROL</a>	1052-9276	1146	7.174	6.048	1.174	23	4.3	0.00616	2.119
<input type="checkbox"/>	190	<a href="#">J AM SOC NEPHROL</a>	1046-6673	22501	7.111	7.150	1.504	341	4.7	0.10300	2.245
<input type="checkbox"/>	191	<a href="#">CAN MED ASSOC J</a>	0820-3946	8324	7.067	6.735	3.053	94	6.4	0.02893	2.292
<input type="checkbox"/>	192	<a href="#">SEMIN IMMUNOL</a>	1044-5323	2527	7.000	6.809	1.543	35	4.9	0.01733	3.566
<input type="checkbox"/>	193	<a href="#">NUCLEIC ACIDS RES</a>	0305-1048	83534	6.954	7.163	1.589	1012	6.5	0.35897	2.898
<input type="checkbox"/>	193	<a href="#">PHYSIOLOGY</a>	1548-9213	979	6.954	7.684	0.744	39	2.6	0.00887	3.347
<input type="checkbox"/>	195	<a href="#">PHYS REV LETT</a>	0031-9007	282787	6.944	6.906	1.645	3545	7.0	1.26804	3.218
<input type="checkbox"/>	196	<a href="#">LEUKEMIA</a>	0887-6924	13127	6.924	5.993	2.036	252	4.9	0.05620	1.931
<input type="checkbox"/>	197	<a href="#">REV GEOPHYS</a>	8755-1209	4582	6.900	12.375	0.720	25	>10.0	0.01176	7.902
<input type="checkbox"/>	198	<a href="#">J CELL MOL MED</a>	1582-1838	1801	6.807	5.631	0.408	103	2.8	0.01163	1.678
<input type="checkbox"/>	199	<a href="#">FASEB J</a>	0892-6638	32421	6.791	6.963	1.361	388	6.0	0.13042	2.491
<input type="checkbox"/>	200	<a href="#">DRUG DISCOV TODAY</a>	1359-6446	4779	6.761	6.951	1.123	122	3.4	0.02668	2.075

Journals 181 - 200 (of 6426)

Navigation: [1 | 2 | 3 | 4 | 5 | 6 | 7 | 8 | 9 | 10]

Page 10 of 322





## Care sunt rezultatele practicii pe scara largă a peer review?

ISI Web of Knowledge<sup>SM</sup>

Journal Citation Reports<sup>®</sup>

WELCOME HELP

2007 JCR Science Edition

Journal Summary List [Journal Title Changes](#)

Journals from: All Journals

Sorted by: Impact Factor

Journals 3641 - 3660 (of 6426) Page 183 of 322

MARK ALL UPDATE MARKED LIST

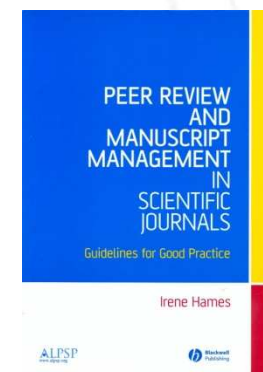
Ranking is based on your journal and sort selections.

Mark	Rank	Abbreviated Journal Title <i>(linked to journal information)</i>	ISSN	JCR Data <sup>j</sup>						Eigenfactor <sup>TM</sup> Metrics <sup>j</sup>	
				Total Cites	Impact Factor	5-Year Impact Factor	Immediacy Index	Articles	Cited Half-life	Eigenfactor <sup>TM</sup> Score	Article Influence <sup>TM</sup> Score
<input type="checkbox"/>	3620	<a href="#">RES NURS HEALTH</a>	0160-6891	1748	1.000	1.528	0.074	54	>10.0	0.00222	0.447
<input type="checkbox"/>	3620	<a href="#">REV MED MICROBIOL</a>	0954-139X	190	1.000	0.882	0.000	9	9.6	0.00038	0.214
<input type="checkbox"/>	3620	<a href="#">RIV NUOVO CIMENTO</a>	0393-697X	363	1.000	2.375	0.000	6	>10.0	0.00114	1.020
<input type="checkbox"/>	3620	<a href="#">TRANSPORT RES E-LOG</a>	1366-5545	350	1.000	1.391	0.191	47	5.3	0.00239	0.746
<input type="checkbox"/>	3620	<a href="#">USER MODEL USER-ADAP</a>	0924-1868	336	1.000	2.576	0.200	15	6.2	0.00094	0.683
<input type="checkbox"/>	3646	<a href="#">ANZ J SURG</a>	1445-1433	1402	0.998	1.096	0.323	192	3.7	0.00807	0.314
<input type="checkbox"/>	3646	<a href="#">SOUTH MED J</a>	0038-4348	3962	0.998	0.985	0.410	210	>10.0	0.00779	0.290
<input type="checkbox"/>	3648	<a href="#">NUCL INSTRUM METH B</a>	0168-583X	14570	0.997	1.090	0.103	1414	6.9	0.04811	0.351
<input type="checkbox"/>	3649	<a href="#">INT J PROD ECON</a>	0925-5273	2601	0.995	1.490	0.066	212	6.2	0.01022	0.537
<input type="checkbox"/>	3650	<a href="#">CHILD NERV SYST</a>	0256-7040	2435	0.993	1.232	0.184	201	7.2	0.00628	0.350
<input type="checkbox"/>	3651	<a href="#">ADV APPL PROBAB</a>	0001-8678	1329	0.991	1.007	0.130	54	>10.0	0.00667	1.040
<input type="checkbox"/>	3651	<a href="#">CEREAL CHEM</a>	0009-0352	5248	0.991	1.334	0.129	101	>10.0	0.00536	0.351
<input type="checkbox"/>	3651	<a href="#">J BASIC MICROB</a>	0233-111X	658	0.991	1.066	0.143	63	6.5	0.00203	0.322
<input type="checkbox"/>	3651	<a href="#">PEDIATR RADIOLOG</a>	0301-0449	2939	0.991	1.115	0.238	214	7.9	0.00828	0.357
<input type="checkbox"/>	3655	<a href="#">DIAGN CYTOPATHOL</a>	8755-1039	1973	0.990	1.070	0.143	140	7.2	0.00439	0.254
<input type="checkbox"/>	3656	<a href="#">AM J MATH</a>	0002-9327	2824	0.989	1.183	0.174	46	>10.0	0.00911	1.788
<input type="checkbox"/>	3656	<a href="#">FACIES</a>	0172-9179	646	0.989	1.218	0.324	37	9.5	0.00176	0.424
<input type="checkbox"/>	3656	<a href="#">FOLIA MICROBIOL</a>	0015-5632	922	0.989	0.883	0.079	89	5.8	0.00192	0.156
<input type="checkbox"/>	3656	<a href="#">J REINE ANGEW MATH</a>	0075-4102	2804	0.989	1.006	0.135	96	>10.0	0.01693	1.465
<input type="checkbox"/>	3660	<a href="#">AIAA J</a>	0001-1452	8683	0.988	1.245	0.113	311	>10.0	0.02523	0.680



## Cele 14 reguli de bază ale peer review (1-7)

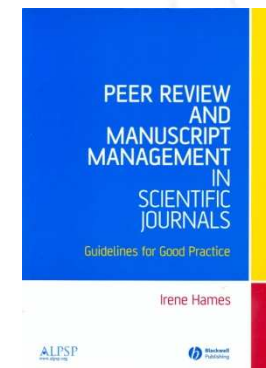
1. Responsabilitatea editorului: A) calitatea publicației,  
B) ceea ce e publicat este corect, etic și relevant pt cititori
2. Peer review înseamnă evalaure de către referenți externi
3. Transmiterea manuscrisului și detaliile asociate trebuie păstrate confidențiale
4. Identitatea referenților trebuie să rămână confidențială (excepție peer review deschis)
5. Referenții consiliează și fac recomandări; EDITORUL IA DECIZII
6. Referenții evaluează obiectiv manuscritele, nu evaluează autorii
7. Redactorul sef are independență TOTALĂ





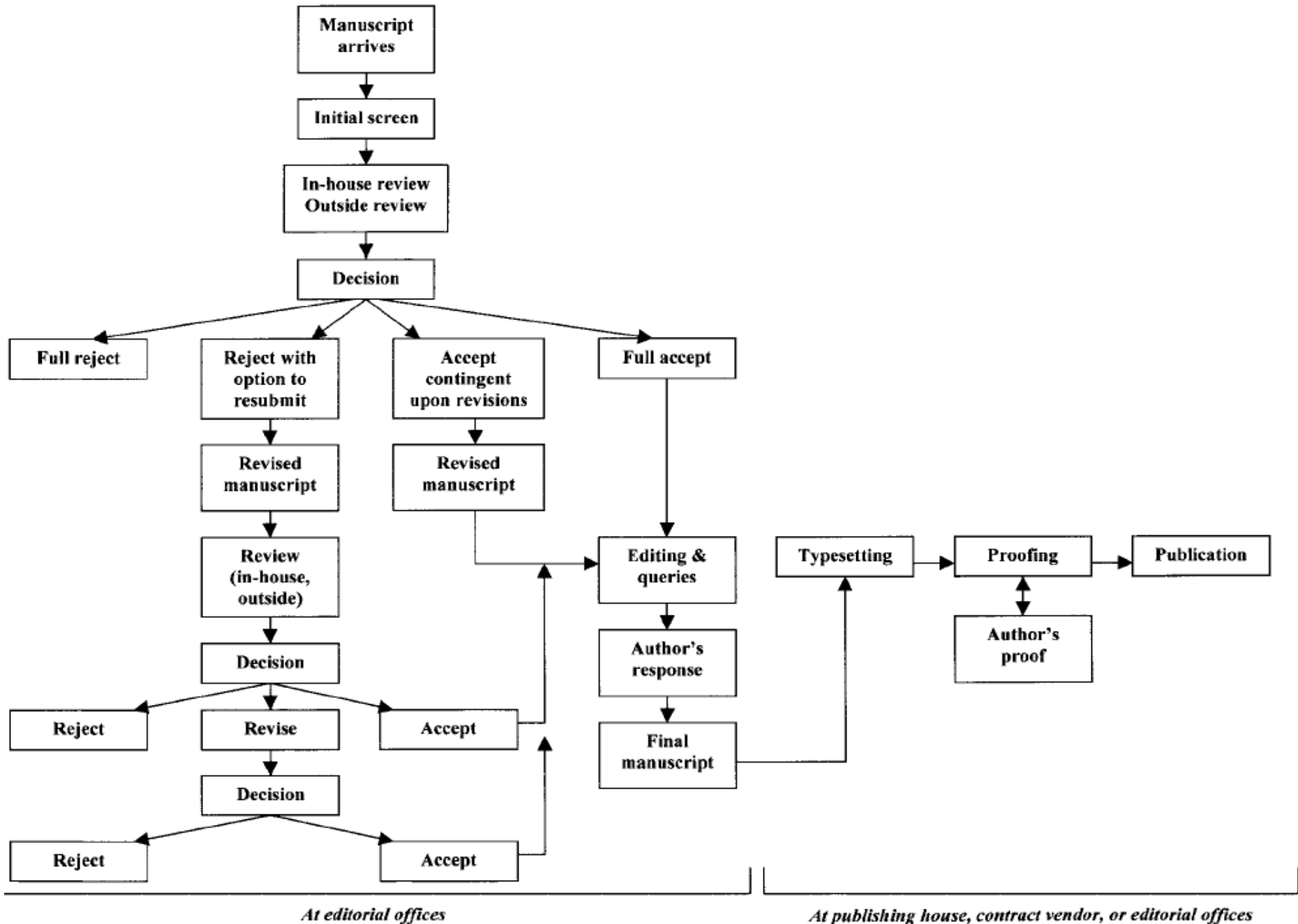
## Cele 14 reguli de bază ale peer review (8-14)

8. Decizia editorului: A) calitatea manuscrisului; adecvarea pt. publicație  
B) neinfluențată de: rațiuni comerciale, originea manuscrisului, politicile altor instituții
9. Peer review înseamnă standarde etice înalte
10. Detaliile întregului proces de evaluare nu pot fi folosite în avantajul celor implicați și nici pt a discredita
11. Conflictele de interes trebuie declarate înaintea demarării procedurii
12. Nici un conflict de interes nu trebuie să influențeze revizia științifică și nici decizia publicării
13. Suspiciunea sau indiciile de conduită incorectă nu trebuie ignorate
14. Atât editorii cât și publicațiile au datoria de a păstra înregistrări care să împiedice interpretări incorecte, pentru mediul academic





# Procedura de „peer review”





**Table 2.4** Information that needs to be kept on manuscripts.



## Procedura de „peer review”

### Manuscript details

#### *Required*

Reference number

Title

Authors

Corresponding author (CA)

Address and contact details of CA

Type of article

Whether for a special or themed issue

Whether it is a revision

Whether it is a resubmission (with previous manuscript number)

Handling editor

Whether copyright assignment or licence to publish received if required

Whether all permissions and required correspondence received

Charges due

Any requests for waivers of charges

Any non-compliance with journal policy

Relevant notes

#### *Optional (but recommended)*

Length (word count or pages), possibly broken down into sections

Number of figures and tables

Number of colour figures

Whether supplementary material provided

Whether cover image submitted

Suggested and/or excluded reviewers from author

PEER REVIEW  
AND  
MANUSCRIPT  
MANAGEMENT  
IN  
SCIENTIFIC  
JOURNALS

Guidelines for Good Practice

Irene Hames



## Procedura de „peer review”

### Transaction information

#### *Required*

Date manuscript received

Date manuscript assigned or sent to editor

Date reviewer list received from editor (if applicable to process operated)

Details of all individuals approached to review, with dates and outcome

Names of reviewers found

Dates manuscript assigned or sent to reviewers

Dates reviews due

Dates reviewers reminded

Dates reviews returned

Date reviews to editor

Date decision to CA

### Decision

Date revision received (with above details if sent for review)

Date decision on revised manuscript to CA

Relevant notes

Current status

Date accepted manuscript to production and any relevant notes

Publication details for accepted manuscript

**Volum mare de date = solutii informatice necesare!**

PEER REVIEW  
AND  
MANUSCRIPT  
MANAGEMENT  
IN  
SCIENTIFIC  
JOURNALS

Guidelines for Good Practice

Irene Hames



# SCHOLARONE MANUSCRIPTS™

## THE ONLINE MANUSCRIPT SUBMISSION AND PEER REVIEW PROCESS

### WHAT IT DELIVERS

- An end-to-end solution for over 195 societies, publishers and university presses
- A workflow system for more than 3,000 journals
- Support to over 5 million registered users
- Currently accepting 1.1 million annual submissions
- A fully customizable solution
- Plagiarism detection
- Cognos Reporting
- Simplified Chinese Interface
- A qualified team of implementation, training and support experts

### SIMPLIFY MANUSCRIPT SUBMISSION

ScholarOne Manuscripts is the leading system for web-based manuscript submission, peer review, and tracking.

### WHAT IT OFFERS

- Journal-editable, page-specific instructions
- Intuitive graphical interface that can be saved at any point in the process
- Submission status indicators
- Journal-specific submission questions, key words, file types, field size limits, and more
- Multilanguage capture of data and files for non-English manuscripts
- HTML and PDF proofs created on the fly
- Multimedia file submission
- Automated citation hyperlink to PubMed
- Any time manuscript status checking

### EXPERTS FOCUS ON CONTENT

ScholarOne Manuscripts eases the administrative burden on editors, allowing them to focus on qualitative tasks that increase the value of the content.



- Contents
- Index
- Search
- Getting Started
- Home
- System Requirements
- Manuscript Central Basics
  - About Standard Review Processes
  - System Role Types and Roles
- Creating and Maintaining an Account
  - Creating Your User Account
  - Changing Your Account Information
  - Understanding Account Access Privileges
- Logging In/Out
  - Initial Log In
  - Logging Out
  - Forgot Your Password?
- Understanding the Interface
  - Welcome Page
  - Header Features
  - Progress Bar
- Submitting Manuscripts
  - Understanding the Author Center Dashboard
    - Author Center Overview
    - My Manuscripts Section
    - Author Resources
    - Post-Decision Actions
  - Submitting an Original Manuscript
    - Creating a Revision
    - Creating a Resubmission
    - Approving a First Look PDF
    - Uploading TeX/LaTeX files
    - Using the "Submitting Agent" Functionality
  - Reviewing and Scoring Manuscripts
    - Receiving and Responding to an Invitation





# Procedura de „peer review”

## Author Center Overview

When you log in and click the Author Center link, the Dashboard page opens. This is where you submit your manuscripts. Also, at a glance view details of all your manuscripts in the journal's Manuscript Central site.

The navigation menu includes the following items:

- Contents | Index | Search
- Getting Started
  - Home
  - System Requirements
- Manuscript Central Basics
  - About Standard Review Processes
  - System Role Types and Roles
- Creating and Maintaining an Account
  - Creating Your User Account
  - Changing Your Account Information
  - Understanding Account Access Privileges
- Logging In/Out
  - Initial Log In
  - Logging Out
  - Forgot Your Password?
- Understanding the Interface
  - Welcome Page
  - Header Features
  - Progress Bar
- Submitting Manuscripts
  - Understanding the Author Center Dashboard
    - Author Center Overview
    - My Manuscripts Section
    - Author Resources
    - Post-Decision Actions
  - Submitting an Original Manuscript
    - Creating a Revision
    - Creating a Resubmission
    - Approving a First Look PDF
    - Uploading TeX/LaTeX files
    - Using the "Submitting Agent" Functionality
  - Reviewing and Scoring Manuscripts
    - Receiving and Responding to an Invitation

### Dashboard

- To submit a new manuscript, click on the "Submit a Manuscript" link above.
- Clicking on the various manuscript status links under "My Manuscripts" will display a list of all the manuscripts in that status at the bottom of the screen.
- To continue a submission already in progress, click the "Continue Submission" link in the "Unsubmitted Manuscripts" list.

#### My Manuscripts

- 0 [Unsubmitted Manuscripts](#)
- 0 [Resubmitted Manuscripts in Draft](#)
- 0 [Revised Manuscripts in Draft](#)
- 1 [Submitted Manuscripts](#)
- 0 [Manuscripts with Decisions](#)
- 0 [Manuscripts I Have Co-Authored](#)
- 0 [Withdrawn Manuscripts](#)
- 0 [Manuscripts Accepted for ARC](#)
- 0 [Invited Manuscripts](#)

#### Author Resources

[Click here](#) to submit a new manuscript

This section lists the subjects of the five most recent e-mails that have been sent to you regarding your manuscript submission(s). To view an e-mail, click on the link. To delete an e-mail from this list, click the delete link.

#### Submitted Manuscripts

Manuscript ID	Title	Date Created	Date Submitted	Status
WRK1-0048	<a href="#">The Effect of Moonbeams on Kittens [View Manuscript] (cover letter)</a>	17-Feb-2005	17-Feb-2005	ADM: Not Assigned * In Review

top



<http://mcv3help.manuscriptcentral.com/tutorials/Author.pdf>

- Getting Started
- Home
- System Requirements
- Manuscript Central Basics
  - About Standard Review Processes
  - System Role Types and Roles
- Creating and Maintaining an Account
  - Creating Your User Account
  - Changing Your Account Information
  - Understanding Account Access Privileges
- Logging In/Out
  - Initial Log In
  - Logging Out
  - Forgot Your Password?
- Understanding the Interface
  - Welcome Page
  - Header Features
  - Progress Bar
- Submitting Manuscripts
  - Understanding the Author Center Dashboard
    - Author Center Overview
    - My Manuscripts Section
    - Author Resources
    - Post-Decision Actions
  - Submitting an Original Manuscript
    - Creating a Revision
    - Creating a Resubmission
    - Approving a First Look PDF
    - Uploading TeX/LaTeX files
    - Using the "Submitting Agent" Functionality
  - Reviewing and Scoring Manuscripts
    - Receiving and Responding to an Invitation
    - The Reviewer Center
    - The Review Manuscripts Page
    - Reviewing Proofs
    - Submitting a Review
- General Information Tabs

## Dashboard

- To submit a new manuscript, click on the "Submit a Manuscript" link above.
- Clicking on the various manuscript status links under "My Manuscripts" will display a list of all the manuscripts in that status at the bottom of the screen.
- To continue a submission already in progress, click the "Continue Submission" link in the "Unsubmitted Manuscripts" list.

### My Manuscripts

- 0 [Unsubmitted Manuscripts](#)
- 0 [Resubmitted Manuscripts in Draft](#)
- 0 [Revised Manuscripts in Draft](#)
- 1 [Submitted Manuscripts](#)
- 0 [Manuscripts with Decisions](#)
- 0 [Manuscripts I Have Co-Authored](#)
- 0 [Withdrawn Manuscripts](#)
- 0 [Manuscripts Accepted for ARC](#)
- 0 [Invited Manuscripts](#)

### Author Resources

[Click here](#) to submit a new manuscript

This section lists the subjects of the five most recent e-mails that have been sent to you regarding your manuscript submission(s). To view an e-mail, click on the link. To delete an e-mail from this list, click the delete link.

### Submitted Manuscripts

Manuscript ID	Title	Date Created	Date Submitted	Status
WRK1-0048	The Effect of Moonbeams on Kittens <a href="#">[View Manuscript]</a> <a href="#">[cover letter]</a>	17-Feb-2005	17-Feb-2005	ADM: Not Assigned • In Review

top

Contents    Index    Search

- Getting Started
- Home
- System Requirements
- Manuscript Central Basics
  - About Standard Review Processes
  - System Role Types and Roles
- Creating and Maintaining an Account
  - Creating Your User Account
  - Changing Your Account Information
  - Understanding Account Access Privileges
- Logging In/Out
  - Initial Log In
  - Logging Out
  - Forgot Your Password?
- Understanding the Interface
  - Welcome Page
  - Header Features
  - Progress Bar
- Submitting Manuscripts
  - Understanding the Author Center Dashboard
    - Author Center Overview
    - My Manuscripts Section
    - Author Resources
    - Post-Decision Actions**
  - Submitting an Original Manuscript
    - Creating a Revision
    - Creating a Resubmission
    - Approving a First Look PDF
    - Uploading TeX/LaTeX files
    - Using the "Submitting Agent" Functionality
  - Reviewing and Scoring Manuscripts
    - Receiving and Responding to an Invitation
    - The Reviewer Center
    - The Review Manuscripts Page
    - Reviewing Proofs
    - Submitting a Review
- General Information Tabs

Excelență

# Procedura de „peer review”



Proiecte strategice  
pentru învățământul Superior

<http://mcv3help.manuscriptcentral.com/tutorials/Author.pdf>

Glossary

Print

## Post-Decision Actions

You can view journal decisions about your submitted manuscripts from your Author Center dashboard.

My Manuscripts		Author Resources	
1	<a href="#">Unsubmitted Manuscripts</a>	Click here to submit a new manuscript  This section lists the subjects of the five most recent e-mails that have been sent to you regarding your manuscript submission(s). To view an e-mail, click on the link. To delete an e-mail from this list, click the delete link.	
0	<a href="#">Resubmitted Manuscripts in Draft</a>		
1	<a href="#">Revised Manuscripts in Draft</a>		
2	<a href="#">Submitted Manuscripts</a>		
6	<b><a href="#">Manuscripts with Decisions</a></b>		
3	<a href="#">Manuscripts I Have Co-Authored</a>		
1	<a href="#">Withdrawn Manuscripts</a>		
0	<a href="#">Manuscripts Accepted for ARC</a>		
0	<a href="#">Invited Manuscripts</a>		

Manuscripts with Decisions					
Manuscript ID	Title	Date Submitted	Date Decided	Status	Actions
WRK1-0006	Title - Test Article - 1/19/2005 8:55 <a href="#">[View Manuscript]</a>	19-Jan-2005	21-Jan-2005	ADM: King, Kitty = Accept Scheduled for archiving in 25 days <a href="#">view decision letter</a>	
WRK1-0010	Title - Test Article - 1/20/2005 7:36 <a href="#">[View Manuscript]</a>	20-Jan-2005	21-Jan-2005	= Minor Revision a revision exists <a href="#">view decision letter</a>	a revision has been started (WRK1-0010.R1)
WRK1-0015	Title - Test Article - 1/24/2005 8:24 CQ <a href="#">[View Manuscript]</a>	24-Jan-2005	18-Feb-2005	= Immediate Reject & Resubmit due on 20-Mar-2005 (27 days left) <a href="#">view decision letter</a>	<a href="#">create a resubmission</a> (27 days left)



## Doctoratul în Științe Scoring & Submitting Your Review



Click the Scoresheet tab to review and score the manuscript. The format varies by journal and may include journal-specific questions, a recommendation field, comments to the author, comments to the editor, and possibly the ability to attach files.

Any fields marked with a red “req” symbol require an answer before you can submit the scoresheet.

req Recommendation	
<input type="radio"/>	Accept
<input type="radio"/>	Major Revision
<input type="radio"/>	Minor Revision
<input type="radio"/>	Reject

**Would you like to review a revision of this manuscript?**

<input type="radio"/>	Yes
<input type="radio"/>	No

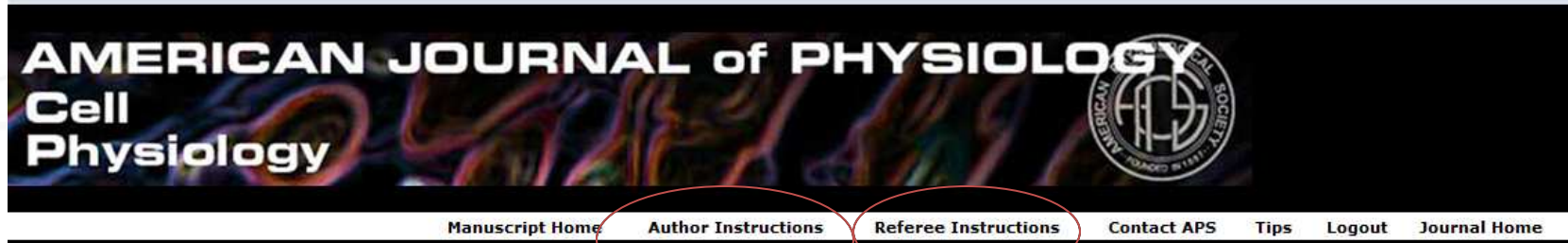
**Comments**

Confidential Comments to the Associate Editor

Comments to the Author

Attach a File	Files attached
<input type="text"/> <input type="button" value="Browse..."/> <input type="button" value="Attach"/>	<ul style="list-style-type: none"><li>No files have been uploaded.</li></ul>

Save as Draft  Submit



To ensure proper functionality of this site, both [JavaScript](#) and [Cookies](#) must be enabled.

[Click for reviewer guidelines](#)

## Reviewer Instructions

### Contents:

- [Review Process](#)
- [Navigating the System](#)
- [Review Manuscript](#)
- [Getting Help](#)
- [Manuscript Status](#)

### Review Process

The manuscript submission and peer review process is broken down into the following steps:

1. The Author submits a manuscript.
2. The Editor assigns Reviewers to the manuscript.
3. The Reviewers review the manuscript.
4. The Editor drafts a decision to be sent to the Author.

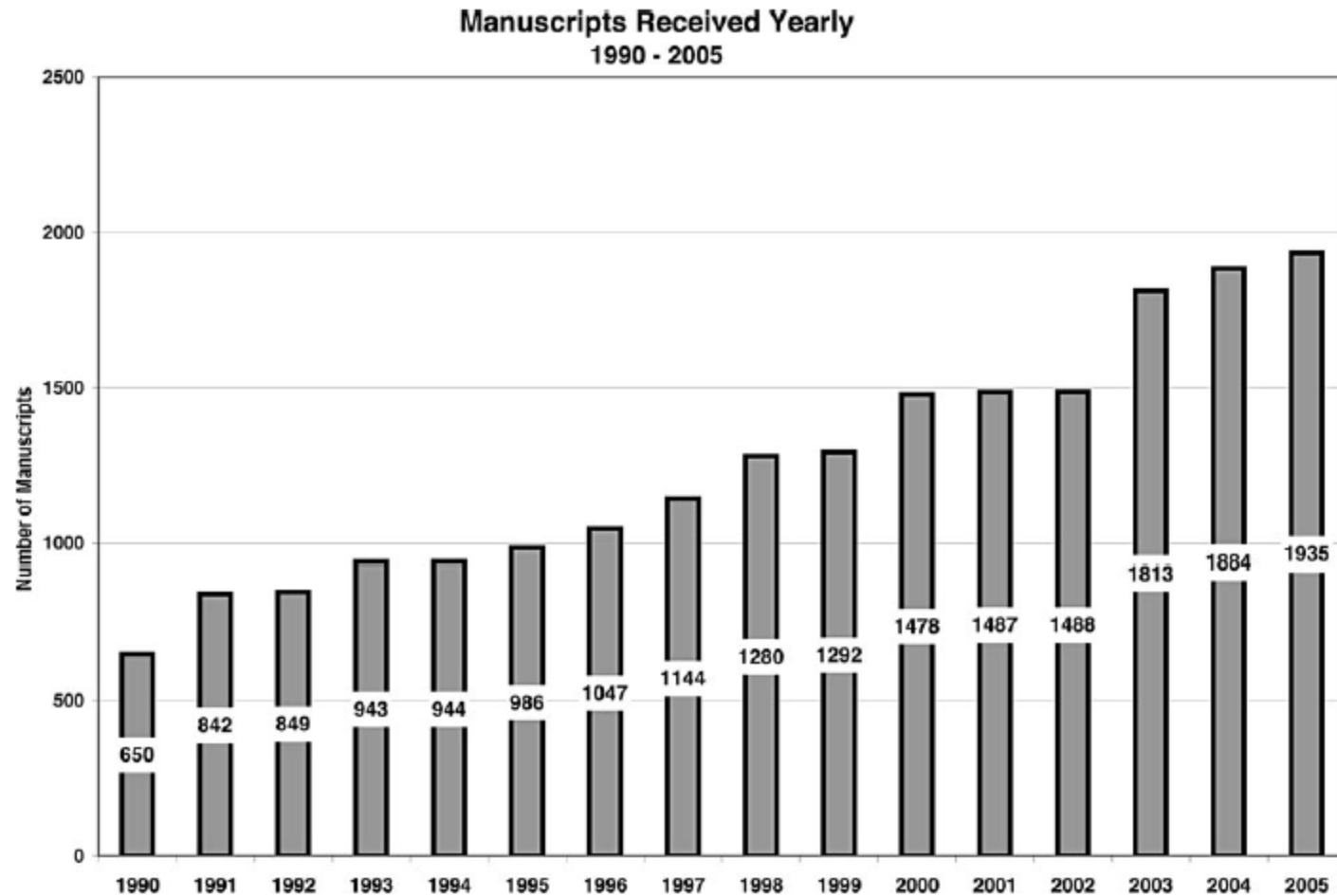
As a Reviewer, you are responsible for step #3.

### Navigating the System

There are two ways to gain access to the system. First, if you know your login name and password, you may log into the system from the home page. Alternatively, if you are invited to review, you may use the encrypted link from this email to be logged in and taken directly to the manuscript.

When you log into the system, you will be taken to your "Home" page. If you have been asked to review any manuscripts, you will see a link (or several links) with a red "r" icon and the "Reviewer Tasks" header. Clicking this link will display the "Manuscript Details Screen," containing:

- Detailed Information about a specific manuscript.
- Links to the manuscript and associated figures/images.
- A list of "Manuscript Tasks" or links allowing you to:
  - Accept/Decline Reviewer Position
  - Check Status
  - Review Manuscript



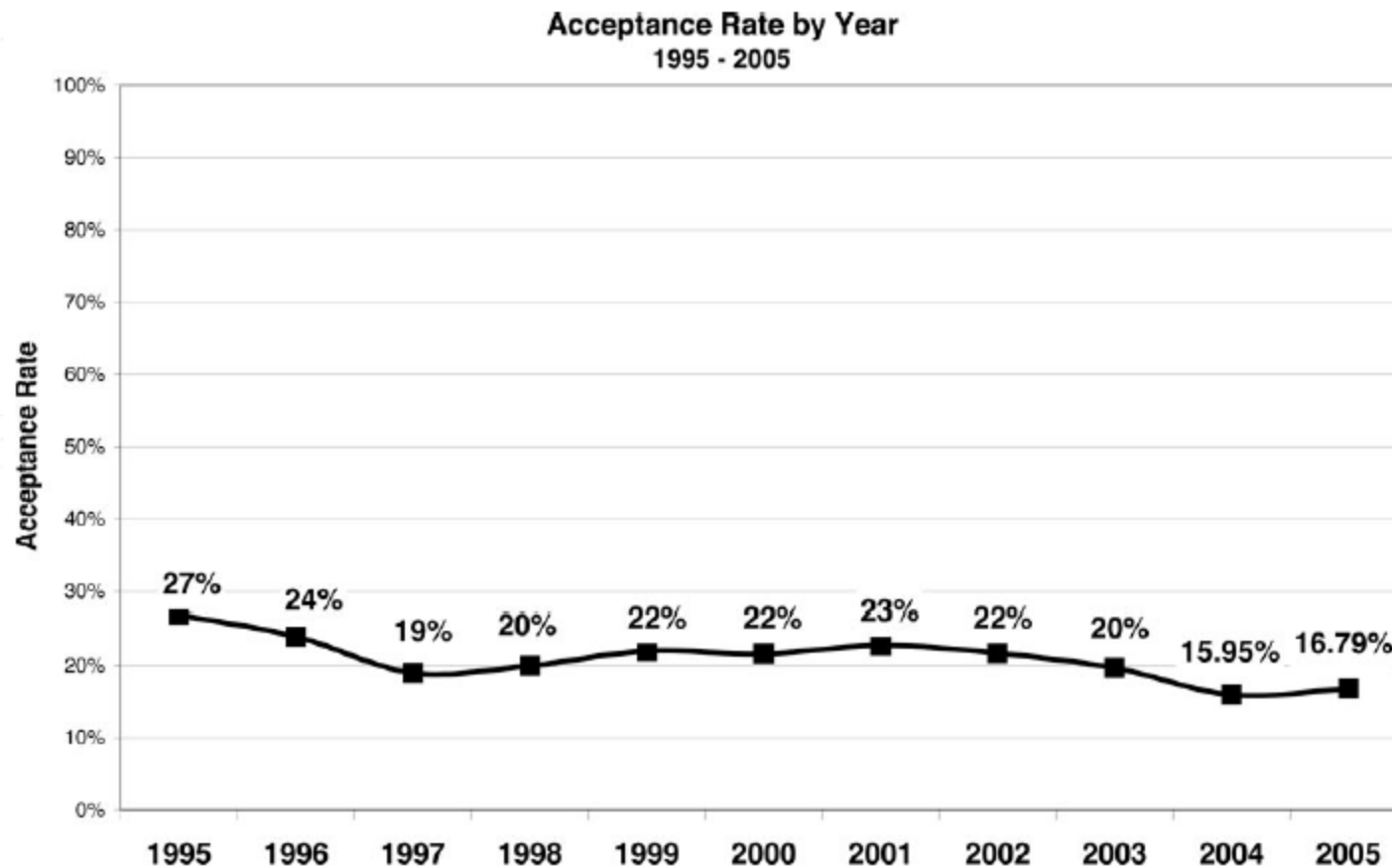
**Figure 1.** Number of submissions to *Circulation Research* by calendar year for 1990 to 2005.



292

*Circulation Research*

February 17, 2006



**Figure 4.** Acceptance rate trend by calendar year for 1995 to 2005.



### Handling Manuscript Rejection\* Insights From Evidence and Experience

*Karen L. Woolley, PhD; and J. Patrick Barron, BA*

*(CHEST 2009; 135:573–577)*

**T**he purpose of this article is to provide authors with insights gained from evidence and experience on how to handle rejected manuscripts.

#### HOW COMMON IS MANUSCRIPT REJECTION?

Authors, particularly inexperienced authors, may take comfort in knowing that manuscript rejection is common.<sup>1,2</sup> One study<sup>3</sup> showed that 62% of published papers had been rejected at least once. Authors should also be aware that many top-tier journals have high rejection rates.<sup>4</sup> Since 2005, the rejection rate for unsolicited manuscripts submitted to *CHEST* has ranged from 87 to 91% (R. Irwin, MD; personal communication; September 2008).

#### REJECTION HURTS, BUT IS IT FATAL?

Most, if not all, authors feel some level of pain when their manuscript is rejected. We find it helpful to remind disappointed authors of the

following: (1) rejected manuscripts still have a reasonable chance of being published within a reasonable time frame (Table 1). In most studies, at least 50% of rejected manuscripts were published within 2 years. At each of our organizations, > 90% of manuscripts are eventually published in a timely manner in journals with an impact factor. (2) The peer-review process means almost all authors receive criticism.<sup>5</sup> (3) Reviewers can provide free and useful suggestions for manuscript improvement.<sup>1,5</sup> Reviewers' comments were deemed valuable by 76% (176 of 231 authors) of authors whose manuscripts were eventually accepted and 60% (21 of 35 authors) of authors whose manuscripts were rejected or withdrawn.<sup>6</sup> (4) Many editors who receive more submissions than they can accept have to reject good manuscripts.<sup>4,7,8</sup> Editors may decide to reject manuscripts without sending them out for peer review.

#### WHAT CHOICES CAN AUTHORS MAKE WHEN THEIR MANUSCRIPT IS REJECTED?

The choices authors make after manuscript rejec-

\*From ProScribe Medical Communications (Dr. Woolley), Queensland, Australia; and International Medical Communica-



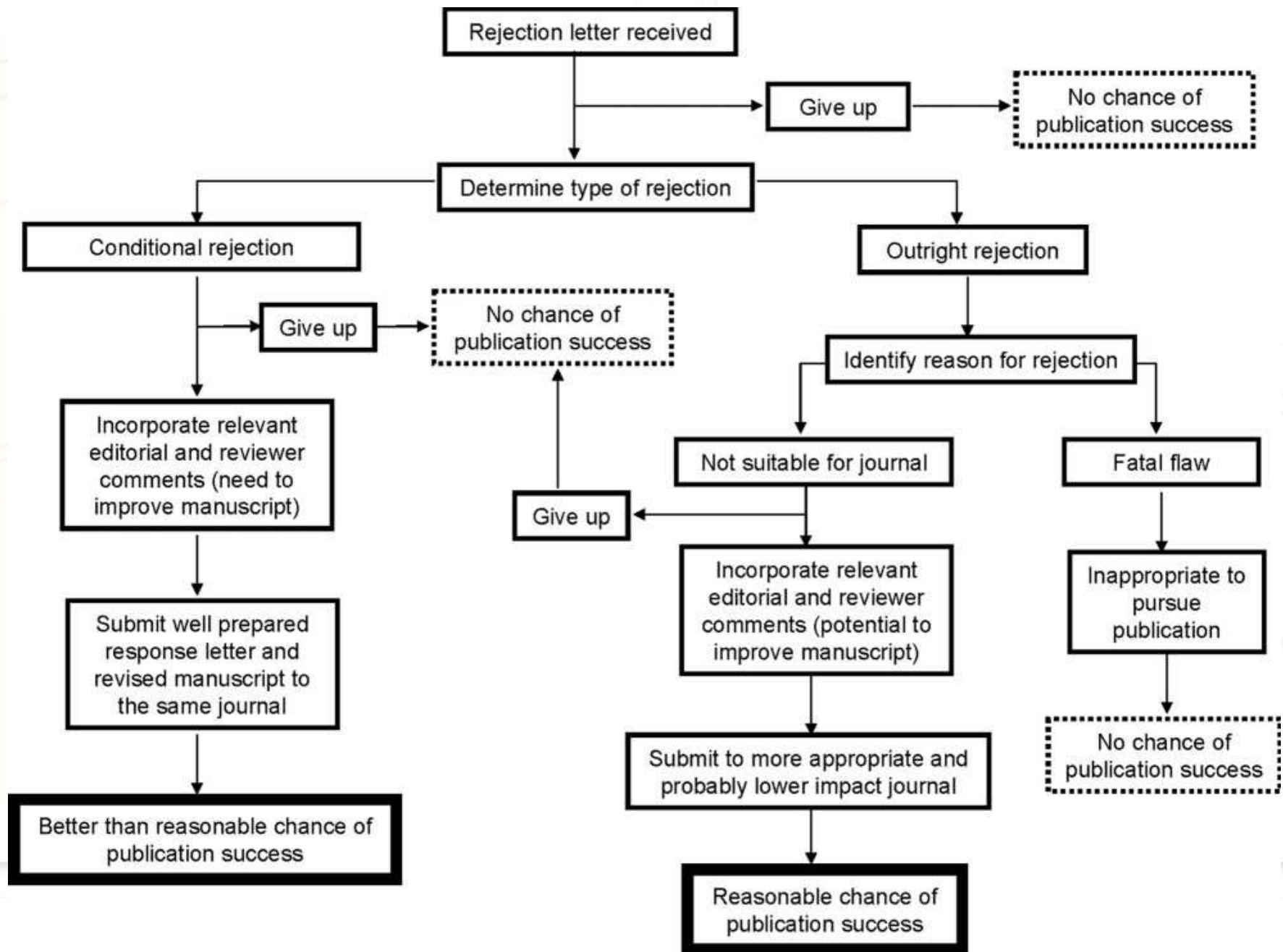




Table 1—*Publication Success Rates for Previously Rejected Manuscripts\**

Study†	Therapeutic Area	Rejected Manuscripts, No.	Rejected Manuscripts Subsequently Published in Other Journals, No. (%)	Publication Delay
Hall and Wilcox, 2007 <sup>3</sup>	Epidemiology	155	116 (75)	Most published within 19 mo
Mundy, 1984 <sup>18</sup>	General medicine	113	82 (73)	Most published within 23 mo
Koch-Weser and Yankauer, 1993 <sup>19</sup>	Public health	83	60 (72)	Most published within 30 mo
Ray et al, 2000 <sup>20</sup>	General medicine	350	240 (69)	Mean time from rejection to publication elsewhere was 18 mo (minimum, 4 mo; maximum, 60 mo)
Chew, 1991 <sup>1</sup>	Diagnostic radiology	254	162 (64)	Mean time from rejection to publication elsewhere was 15 mo (minimum, 2 mo; maximum, 38 mo)
McDonald et al, 2007 <sup>8</sup>	Radiology	554	304 (55)	Mean time from rejection to publication elsewhere was 16 mo (minimum, 1 mo; maximum, 37 mo)
Nemery, 2001 <sup>12</sup>	Occupational and environmental medicine	405	218 (54)	Most published within 24 mo
Liesegang et al, 2007 <sup>7</sup>	Ophthalmology	1344	686 (51)	Most published within 24 mo (median, 15 mo; minimum, 0.4 mo; maximum, 39 mo)
Opthof et al, 2000 <sup>13</sup>	Cardiovascular	644	301 (47)	Most published within 36 mo
Armstrong et al, 2008 <sup>11</sup>	Dermatology	489	201 (41)	Most published within 28 mo
Green and Del Mar, 2006 <sup>6</sup>	General medicine	11	3 (27)	Not reported

# Title, Authors, and Abstract

*Georges Bordage and William C. McGaghie*

## REVIEW CRITERIA

- The title is clear and informative.
- The title is representative of the content and breadth of the study (not misleading).
- The title captures the importance of the study and the attention of the reader.
- The number of authors appears to be appropriate given the study.
- The abstract is complete (thorough); essential details are presented.
- The results in the abstract are presented in sufficient and specific detail.
- The conclusions in the abstract are justified by the information in the abstract and the text.
- There are no inconsistencies in detail between the abstract and the text.
- All of the information in the abstract is present in the text.
- The abstract overall is congruent with the text; the abstract gives the same impression as the text.



## MANUSCRIPT INTRODUCTION

### Problem Statement, Conceptual Framework, and Research Question

*William C. McGaghie, Georges Bordage, and Judy A. Shea\**

#### REVIEW CRITERIA

- The introduction builds a logical case and context for the problem statement.
- The problem statement is clear and well articulated.
- The conceptual (theoretical) framework is explicit and justified.
- The research question (research hypothesis where applicable) is clear, concise, and complete.
- The variables being investigated are clearly identified and presented.



# Reference to the Literature and Documentation

*Sonia J. Crandall, Addeane S. Caellegh, and Ann Steinecke*

## REVIEW CRITERIA

- The literature review is up-to-date.
- The number of references is appropriate and their selection is judicious.
- The review of the literature is well integrated.
- The references are mainly primary sources.
- Ideas are acknowledged appropriately (scholarly attribution) and accurately.
- The literature is analyzed and critically appraised.



# Relevance

*Louis Pangaro and William C. McGaghie*

## REVIEW CRITERIA

- The study is relevant to the mission of the journal or its audience.
- The study addresses important problems or issues; the study is worth doing.
- The study adds to the literature already available on the subject.
- The study has generalizability because of the selection of subjects, setting, and educational intervention or materials.



# METHOD

## Research Design

*William C. McGaghie, Georges Bordage, Sonia Crandall, and Louis Pangaro*

### REVIEW CRITERIA

- The research design is defined and clearly described, and is sufficiently detailed to permit the study to be replicated.
- The design is appropriate (optimal) for the research question.
- The design has internal validity; potential confounding variables or biases are addressed.
- The design has external validity, including subjects, settings, and conditions.
- The design allows for unexpected outcomes or events to occur.
- The design and conduct of the study are plausible.



# Instrumentation, Data Collection, and Quality Control

*Judy A. Shea, William C. McGaghie, and Louis Pangaro*

## REVIEW CRITERIA

- The development and content of the instrument are sufficiently described or referenced, and are sufficiently detailed to permit the study to be replicated.
- The measurement instrument is appropriate given the study's variables; the scoring method is clearly defined.
- The psychometric properties and procedures are clearly presented and appropriate.
- The data set is sufficiently described or referenced.
- Observers or raters were sufficiently trained.
- Data quality control is described and adequate.





# Population and Sample

*William C. McGaghie and Sonia Crandall\**

## REVIEW CRITERIA

- The population is defined clearly, for both subjects (participants) and stimulus (intervention), and is sufficiently described to permit the study to be replicated.
- The sampling procedures are sufficiently described.
- Subject samples are appropriate to the research question.
- Stimulus samples are appropriate to the research question.
- Selection bias is addressed.

# Data Analysis and Statistics

*William C. McGaghie and Sonia Crandall\**

## REVIEW CRITERIA

- Data-analysis procedures are sufficiently described, and are sufficiently detailed to permit the study to be replicated.
- Data-analysis procedures conform to the research design; hypotheses, models, or theory drives the data analyses.
- The assumptions underlying the use of statistics are fulfilled by the data, such as measurement properties of the data and normality of distributions.
- Statistical tests are appropriate (optimal).
- If statistical analysis involves multiple tests or comparisons, proper adjustment of significance level for chance outcomes was applied.
- Power issues are considered in statistical studies with small sample sizes.
- In qualitative research that relies on words instead of numbers, basic requirements of data reliability, validity, trustworthiness, and absence of bias were fulfilled.



# RESULTS

## Reporting of Statistical Analyses

*Glenn Regehr*

### REVIEW CRITERIA

- The assumptions underlying the use of statistics are considered, given the data collected.
- The statistics are reported correctly and appropriately.
- The number of analyses is appropriate.
- Measures of functional significance, such as effect size or proportion of variance accounted for, accompany hypothesis-testing analyses.



# Presentation of Results

*Glenn Regehr*

## REVIEW CRITERIA

- Results are organized in a way that is easy to understand.
- Results are presented effectively; the results are contextualized.
- Results are complete.
- The amount of data presented is sufficient and appropriate.
- Tables, graphs, or figures are used judiciously and agree with the text.

# DISCUSSION AND CONCLUSION

## Discussion and Conclusion: Interpretation

*Sonia J. Crandall and William C. McGaghie*

### REVIEW CRITERIA

- The conclusions are clearly stated; key points stand out.
- The conclusions follow from the design, methods, and results; justification of conclusions is well articulated.
- Interpretations of the results are appropriate; the conclusions are accurate (not misleading).
- The study limitations are discussed.
- Alternative interpretations for the findings are considered.
- Statistical differences are distinguished from meaningful differences.
- Personal perspectives or values related to interpretations are discussed.
- Practical significance or theoretical implications are discussed; guidance for future studies is offered.



# Presentation and Documentation

*Gary Penn, Ann Steinecke, and Judy A. Shea*

## REVIEW CRITERIA

- The text is well written and easy to follow.
- The vocabulary is appropriate.
- The content is complete and fully congruent.
- The manuscript is well organized.
- The data reported are accurate (e.g., numbers add up) and appropriate; tables and figures are used effectively and agree with the text.
- Reference citations are complete and accurate.



# Scientific Conduct

*Louis Pangaro and William C. McGaghie*

## REVIEW CRITERIA

- There are no instances of plagiarism.
- Ideas and materials of others are correctly attributed.
- Prior publication by the author(s) of substantial portions of the data or study is appropriately acknowledged.
- There is no apparent conflict of interest.
- There is an explicit statement of approval by an institutional review board (IRB) for studies directly involving human subjects or data about them.

